

## RIDUTTORE DI PRESSIONE TIPO R 1200 Q / R 31200

### PRESSURE REGULATOR TYPE R 31200 Q / R 31200

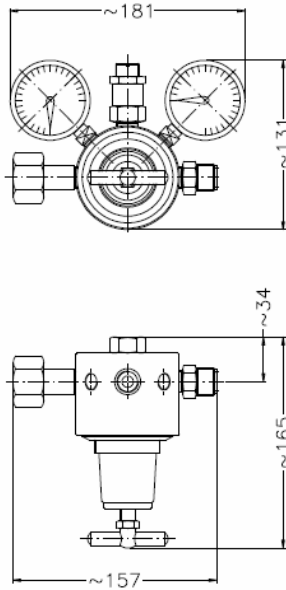
Regolatori di pressione in ottone [R1200]  
 Regolatori di pressione in acciaio inox 316L  
 [R31200]

*Brass pressure regulators [R1200]*  
*Stainless steel 316L pressure regulators [R31200]*

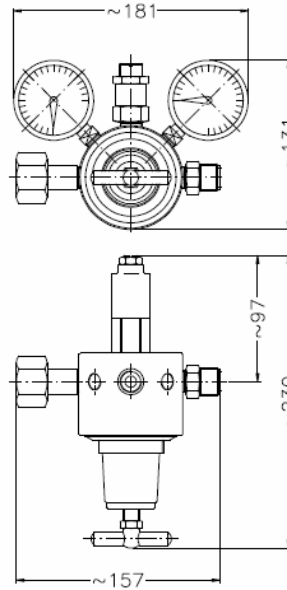


<b>Pressione di ingresso massima</b>	<b>Max. inlet press.</b>	<b>220 bar</b>	
<b>Materiale di costruzione</b> <i>Material of construction</i> <b>R 1200</b> LAQ, MBQ, MCQ, MDQ, HBQ, HCQ, HDQ, HFQ	corpo <i>body</i> campana <i>bonnet</i> parti interne <i>inner parts</i> membrana <i>diaphragm</i> pistone <i>piston</i>	ottone ottone ottone gomma con PTFE ottone	<i>brass</i> <i>brass</i> <i>brass</i> <i>rubber with PTFE</i> <i>brass</i>
<b>Materiale di costruzione</b> <i>Material of construction</i> <b>R 31200</b> MB, MC, MD, HB, HC, HD, HF	corpo <i>body</i> campana <i>bonnet</i> parti interne <i>inner parts</i> membrana <i>diaphragm</i> pistone <i>piston</i>	acciaio inox 316L acciaio inox 316L acciaio inox 316L acciaio inox 316L acciaio inox 316L	<i>stainless steel 316</i> <i>stainless steel 316</i> <i>stainless steel 316</i> <i>stainless steel 316</i> <i>stainless steel 316</i>
Otturatore	<i>Shutter</i>	Standard	
Tenuta otturatore	<i>Seal of the shutter</i>	resiliente	<i>soft</i>
Attacco entrata	<i>Inlet connection</i>	Codolo e dado G3/4"	<i>End with G3/4" nut</i>
Gas non combustibili	<i>Not flammable gases</i>	Destro	<i>Right hand</i>
Gas combustibili	<i>Flamable gases</i>	Sinistro	<i>Left hand</i>
Attacco uscita [LA-MB-HB]	<i>Outlet connection</i>	G1/2" maschio	<i>G1/2" male</i>
Gas non combustibili	<i>Not flammable gases</i>	Destro	<i>Right hand</i>
Gas combustibili	<i>Flamable gases</i>	Sinistro	<i>Left hand</i>
Attacco uscita [MC-HC-HD-HF]	<i>Outlet connection</i>	G3/8" femmina destro	<i>G3/8" female right</i>
Manometro entrata	<i>Inlet gauge</i>	Incluso	<i>included</i>
Manometro uscita	<i>Outlet gauge</i>	Incluso	<i>included</i>
Filtro	<i>Filter</i>	Incluso nel corpo	<i>included on body</i>
Valvola di sovrappressione	<i>Over pressure - valve</i>	inclusa Non inclusa su HF	<i>included</i> <i>Not included on HF</i>
Otturatore bilanciato	<i>Balanced shutter</i>	incluso [Eccetto LA-HF]	<i>included</i> <i>[Except LA-HF]</i>
Temperatura di lavoro	<i>Working temperature</i>	Da -20°C a +60°C	<i>from -20°C to +60°C</i>

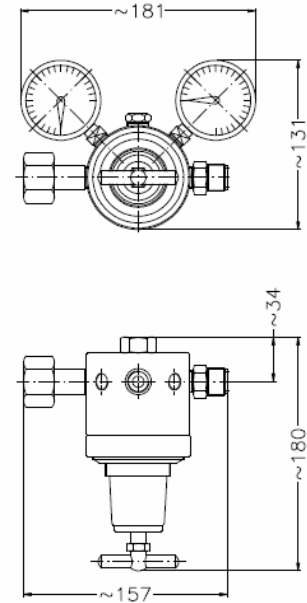
Disegni relativi ai diversi modelli R1200 ed R31200:  
*Drawings of different models of R1200 and R31200:*



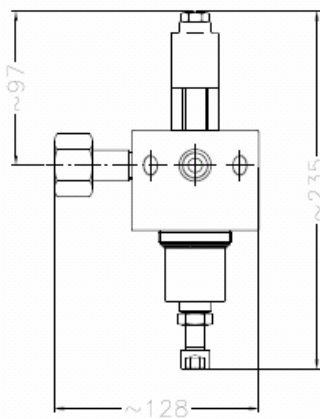
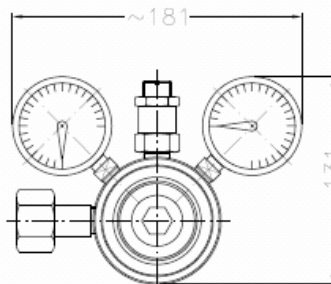
**R1200 [LAQ]**



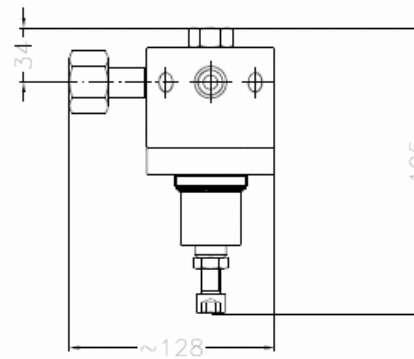
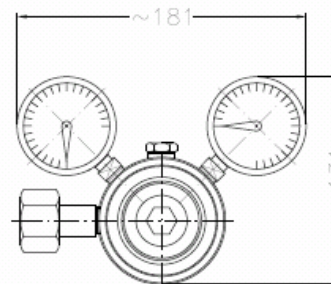
**R1200 [MBQ-MCQ-MDQ-HBQ-HCQ-HDQ]**



**R1200 [HFQ]**



**R31200 [MB-MC-MD-HB-HC-HD]**



**R31200 [HF]**

**MODELLI E PRESTAZIONI  
MODELS AND PERFORMANCES**

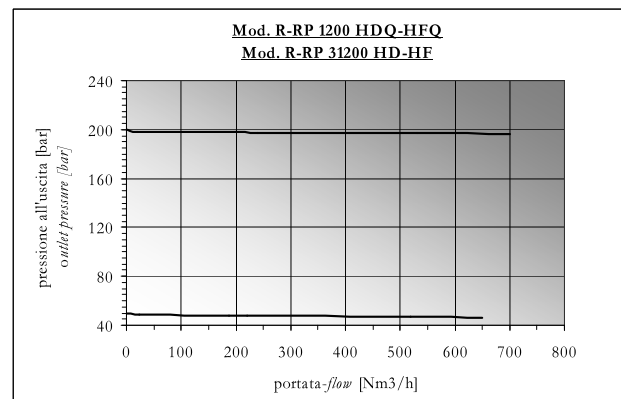
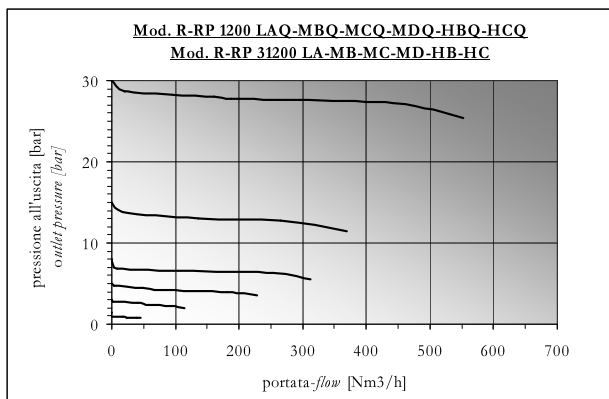
Modello <i>Model</i>	Codice di vendita <i>Sale Codes</i>	P.E. <i>I.P.</i>	P.U. <i>O.P.</i>	portata max max flow	sistema di regolazione <i>regulation system</i>	manometri <i>gauges</i>	
						IN	OUT
		[bar]	[bar]	[Nm <sup>3</sup> /h]			
R 1200 LAQ	1200#00B0A0xxI00	*15	0.2 – 1.5	35	membrana – <i>diaphragm</i>	0 – 25	0 - 2.5
R 1200 MBQ R 31200 MB	1200#00L0E0xxI00 31200#00L0E0xxI00	**80	1.5 – 15	260	membrana – <i>diaphragm</i>	0 – 160	0 - 25
R 1200 MCQ R 31200 MC	1200#00L0F0xxI00 31200#00L0F0xxI00	**80	3 – 30	390	pistone - <i>piston</i>	0 – 160	0 - 63
R 1200 MDQ R 31200 MD	1200#00L0G0xxI00 31200#00L0G0xxI00	**80	5 – 50	450	pistone - <i>piston</i>	0 – 160	0 - 100
R 1200 HBQ R 31200 HB	1200#00J0E0xxI00 31200#00J0E0xxI00	220	1.5 – 15	370	membrana – <i>diaphragm</i>	0 – 315	0 - 25
R 1200 HCQ R 31200 HC	1200#00J0F0xxI00 31200#00J0F0xxI00	220	3 – 30	550	pistone - <i>piston</i>	0 - 315	0 - 63
R 1200 HDQ R 31200 HD	1200#00J0G0xxI00 31200#00J0G0xxI00	220	5 – 50	650	pistone - <i>piston</i>	0 - 315	0 - 100
R 1200 HFQ R 31200 HF	1200#00J0V0xxI00 31200#00J0V0xxI00	220	20 – 200	700	pistone - <i>piston</i>	0 - 315	0 - 315

\* Per Acetilene – *For Acetylene*

\*\* Per gas liquefatti – *For liquefied gas*

Il gas operante (xx nel codice) deve essere indicato al momento dell'ordine.  
*The working gas (xx in the code) is to be indicate with the order.*

Curve di portata ricavate con prove eseguite con Azoto (N<sub>2</sub>) a scarico libero con ingresso a 220 bar:  
*low characteristics obtained by free exhaust test with Nitrogen (N<sub>2</sub>) with 220 bar inlet pressure:*



Le portate con pressione di ingresso a 80 bar sono ridotte del 30% (MA-MB-MC)  
*The Flow rate with inlet pressure at 80 bar is reduced by the 30% (MA-MB-MC)*

RICAMBI	SPARE PARTS
➤ Manometri	➤ <i>Gauges</i>
➤ kit completo con filtro, membrana, guarnizioni ed otturatore	➤ <i>complete kit with filter, diaphragm, gaskets, shutter</i>

<b>ESECUZIONI SPECIALI</b>	<b>SPECIAL EXECUTIONS</b>
<ul style="list-style-type: none"><li>○ Attacchi entrata e uscita diversi da standard</li><li>○ Convogliamento per gas tossici su campana e valvola di sicurezza</li><li>○ Marchiatura speciale</li><li>○ Ghiera e campana per montaggio a pannello</li><li>○ Staffa per montaggio a parete</li><li>○ Modello pilotato</li><li>○ Riduttore pilota</li></ul>	<ul style="list-style-type: none"><li>○ <i>Non standard in / outlet connections</i></li><li>○ <i>Venting for toxic gas on bonnet and safety-valve</i></li><li>○ <i>Special mark on body</i></li><li>○ <i>Nut and bonnet for panel mounting</i></li><li>○ <i>Bracket for wall mounting</i></li><li>○ <i>Model working with remote control</i></li><li>○ <i>Pilot regulator</i></li></ul>

Ci riserviamo di apportare modifiche ai nostri prodotti senza preavviso  
*We reserve to modify our production without previous communication*